

HelioPower®



Company
Profile



Contents

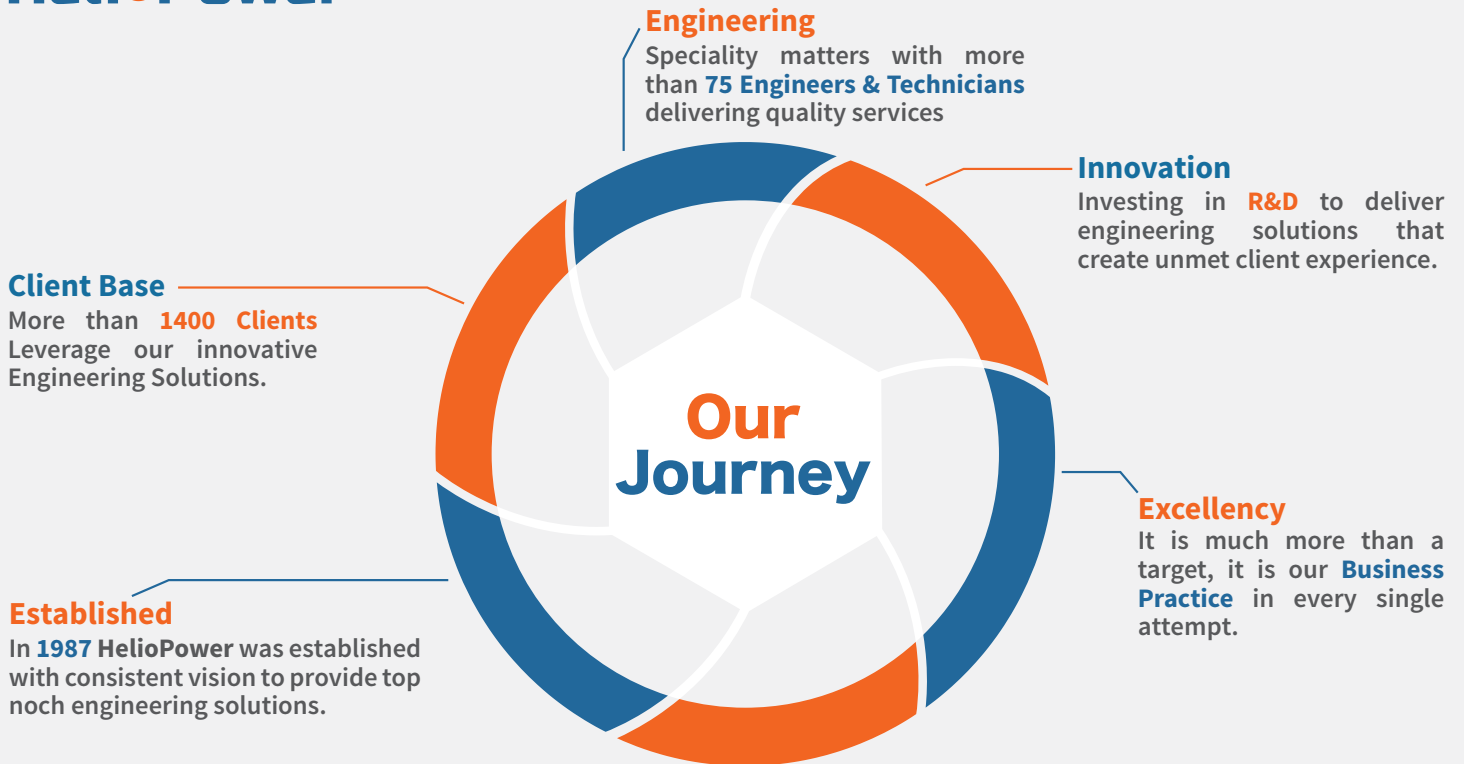
Our Journey

Our Core Values

Our Products

Our Projects

Innovative
Engineering
Solutions



HelioPower values its heritage, its core values and every employee who contributed to the success of the organization. Through our business journey that started in 1987, **HelioPower** founders and successors established a foundation based on respect and appreciation to what we offer to the community.

Engineering solutions offered by **HelioPower** carry hours of creativity, hardwork, dedication and lots of experience that lead to Business Excellency.



Robuschi was founded in 1941 and has been growing ever since. We believe firmly in innovation and investing in **modern machining systems and state-of-the-art production processes**. We are proud to be recognised amongst the global leaders in the production of oil-free compressors at low pressure, lobe blowers, liquid ring vacuum pumps, and centrifugal pumps. Since 2011 we are part of Gardner Denver, a leading manufacturer of air flow control products with an important global footprint.

TRI LOBE BLOWERS

Robuschi design and manufacture high performance rotary tri lobe blowers that meet any working condition with superior efficiency, low noise emission, low pulse, small footprint, minimum maintenance, competitive operating costs and long service life. The Tri Lobe Rotary Positive Displacement Blower.

- **Pressure** : Up to 1,000 mbar (g)
- **Vacuum** : Up to - 500 mbar (a)
- **Air flow** : Up to 25,000 m³/h



LIQUID RING VACUUM PUMPS RVS

The RVS series are robust and heavy duty liquid ring vacuum pumps, available as single stage pump block model, suitable to compress gas and vapours in industrial processes.

- **Vacuum** : Up to 33 mbar (a)
- **Capacity** : Up to 4,200 m³/h

CENTRIFUGAL PUMPS

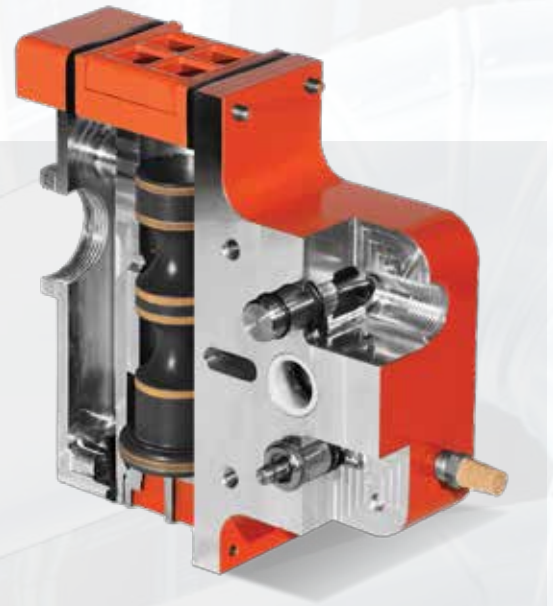
Robuschi centrifugal pumps, are the perfect solution to convey different types of liquids, offering high fluid dynamics efficiency thanks to their heavy duty features and long life components.

- **Head (Max.)** 140 m
- **Temp (Max.)** 280 °C
- **Capacity (Max.)** 2,600 m³/hr
- **Material** Cast iron, 304 Stainless steel, 316 Stainless steel



WILDEN PRO-FLO® SHIFT SERIES

The innovative, yet simple, Pro-Flo SHIFT® design features an air control spool that automatically optimizes air consumption and eliminates the overfilling that can lead to overcharging of the air chamber, all while causing no corresponding reduction in flow rate. This results in a reduction of air consumption and operational costs while maximum operational efficiency and volumetric consistency are maintained. Pro-Flo SHIFT Pumps are an exact fit from bolt-down footprint to inlet/discharge connections and can drop into existing fluid-handling piping systems.



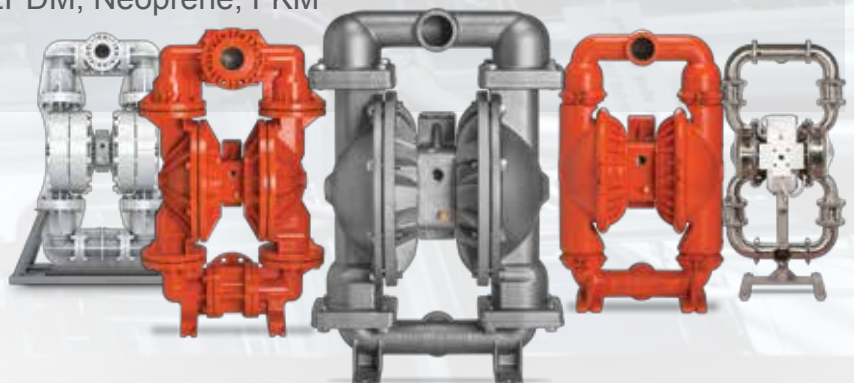
WILDEN PRO-FLO® SERIES



As the industry's workhorse, the Wilden Pro-Flo® Series combines elegant simplicity with robust and reliable performance that end users have come to depend on for more than 20 years. Ideally suited for industrial applications calling for a durable chemical pump or oil pump, Pro-Flo Series pumps utilize advanced technology to increase productivity, reduce energy consumption, reduce air consumption and reduce maintenance. The Pro-Flo Series gives you extreme flexibility and reliability — with a wide range of sizes and material offerings — that end users can count on to deliver the consistent performance promised for challenging applications.

GENERAL PERFORMANCE

- **Sizes** : ¼", ½", 1", 1½", 2", 3", 4"
- **Flow Rates** : Up to 1048 lpm
- **Pressure** : Up to 8.6 bar
- **Materials** : Aluminum, Ductile Iron, Stainless Steel, Alloy-C, Polypropylene, PVDF
- **Elastomers** : Wil-Flex™, Saniflex™, Geolast®, Polyurethane, PTFE, Buna-N, EPDM, Neoprene, FKM
- **Max. Suction lift** : Up to 9.7 m
- **Solid Passage** : Up to 76 mm



RET 5477



**Elmo
Rietschle**

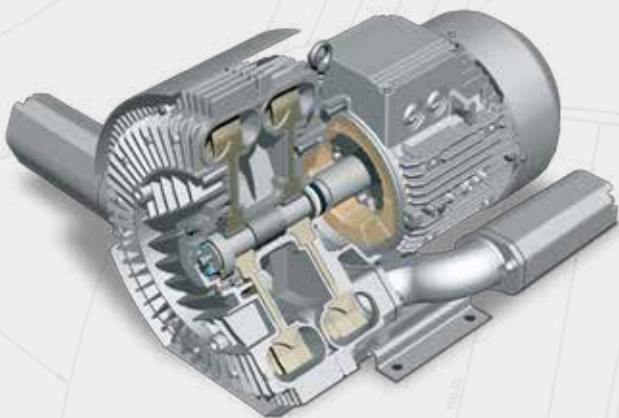
Elmo Rietschle specializes in high-quality blower, vacuum and pressure technologies. These solutions help to reduce energy consumption, improve reliability and up-time, eliminate pollution and provide cost savings. The brand is leading the market in the plastics industry worldwide but also has a strong footprint in the food and beverage, general manufacturing, green technology, and life sciences and laboratories markets. Other key applications include handling, pneumatic conveying and pick and place solutions for general manufacturing purposes.

VANE VACUUM PUMP

Rotary Vane Pumps offer a wide capacity up to 1300 m³/hr in the vacuum ranges Up to 0.1 mbar (abs.) and are robust enough for heavy duty applications. Depending on the processes you want to use these pumps for, you have a choice of dry running or oil-lubricated rotary vane pumps ensuring you can best benefit from the advantages of such technology .



SIDE CHANNEL BLOWER



Elmo Rietschle Side Channel Blowers have proven their reliability in service for many decades, performing flawlessly day in and day out with virtually no down time.

Available in a wide selection of performance ranges up to 3,000 m³/h and differential pressures of up to 1,000 mbar. They cover most requirements flexibly and powerfully.

The G-Series side channel blowers feature voltage range motors for 87/ 60/ 50 and 100 Hz in protection class IP 55 or higher (IP56 or IP65) (insulation class F) and are UL 507 and CSA 22.2 No. 113 approved and are also available with ATEX certification.



Finish Thompson Inc. is a designer and manufacturer of industrial pumps, solvent and engine coolant recyclers and coolant changers. FTI products are manufactured on site in Erie, Pennsylvania, U.S.A. and marketed worldwide through an international network of stocking distributors.

Finish Thompson offers a range of sealless mag-drive centrifugal pumps with run-dry capability including plastic horizontal, plastic self-priming, and heavy duty ANSI models. We also offer mechanically sealed pumps, drum/barrel pumps, vertical mag-drive pumps, and multistage pumps. FTI Air, is a line of high-quality, affordable AODD pumps that includes metallic, non-metallic, FDA-compliant, and conductive polypropylene models.

SEALLESS MAGNETIC DRIVE

Flows : Up to 253 gpm (51 m³/h)

Heads : Up to 201 feet (61.3 m)

- Can lift fluids from as deep as 25 feet (7.6 meters) below the pump (self-priming models)
- Polypropylene or PVDF construction for strong corrosion resistance
- Utilizes powerful neodymium boron iron magnets
- Available with NEMA or IEC motors
- Offered with NPT or BSP threaded, union or ANSI/DIN/JIS flanged connections
- Best efficiency in the world
- ATEX & CE certified



DRUM/BARREL PUMPS

Flows : Up to 40 gpm (9 m³/h)

Heads : Up to 300 feet (91.4 m)

- Constructed of polypropylene, PVDF, 316 SS, CPVC to handle aggressive, corrosive or hazardous fluids
- Universal 115V and 230V motors
- Variable speed motors available
- Viscosities to 100,000 cP
- Tube lengths to 72 inches (183 cm)
- CE certified
- FDA-compliant materials available
- Explosion proof, ATEX certified, electric or air motors.



RET 5477

■ AP SERIES

Flows : Up to 321 gpm (80 m³/h)

Heads : Up to 263 feet (80.2 m)

- Sealed centrifugal pumps
- 316 SS construction
- Horizontal or vertical configurations available
- Carbon, Ceramic, FKM, EPDM, SiC, Buna, or Kalrez® seal materials (Horizontal models)
- Temperatures to 300°F (149°C)
- Available with NEMA or IEC motors
- FDA-compliant materials available
- ATEX & CE certified



■ ULTRACHEM UC SERIES

Flows Up to 1450 gpm (329 m³/h)

Heads Up to 314 feet (95.7 m)

- Sealless magnetic drive
- ANSI dimensional
- Rugged ductile iron housing lined with DuPont Tefzel® ETFE)
- ANSI/ISO/DIN/PN flanges
- Utilizes powerful neodymium boron iron magnets
- Runs dry with carbon bushing and SiC Dri-Coat®
- Modified concentric volute, partial splitter, or conventional volute for industry lowest radial loads
- Available with NEMA or IEC motors
- ATEX certified

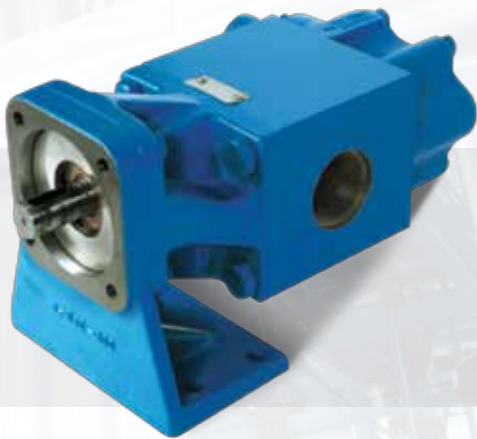
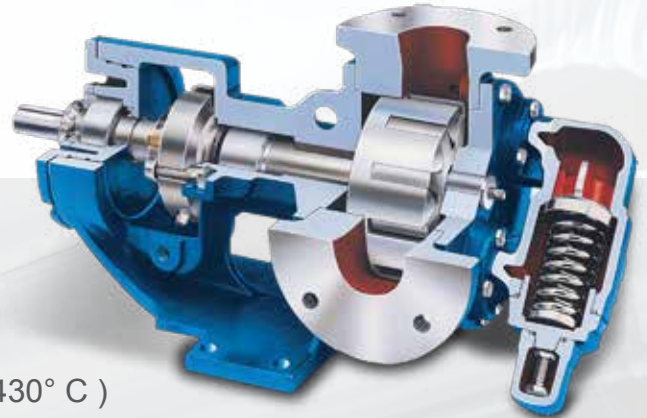


VIKING PUMP®

Through +100 years of pumping experience, **Viking** have developed uniquely designed products with a specific application in mind. These products focus on solving targeted challenges that exist within liquid applications. From speed to viscosity, sealing or shear, these products provide additional security that the product is right for the applications they are built for.

INTERNAL GEAR PUMP

- **Capacity** : Up to 1600 GPM (360 m³/hr)
- **Pressure** : Up to 250 PSI (17 bar)
- **Viscosity** : 28 to 2,000,000 SSU
(0.1 to 500,000 cSt)
- **Temperature** : -120° F to + 800° F (-85° C to +430° C)

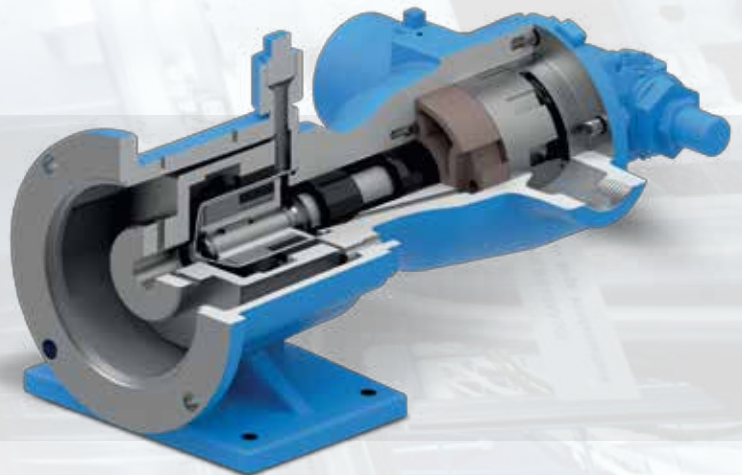


EXTERNAL GEAR PUMP

- **Capacity** : Up to 190 GPM (43 m³/hr)
- **Pressure** : Up to 2500 PSI (170 bar)
- **Viscosity** : 28 to 1,000,000 SSU
(0.1 to 250,000 cSt)
- **Temperature** : -40° F to + 450° F (-40° C to +230° C)

SPECIALTY PUMP

- Magnetic Drive Pumps
- Abrasive Liquid Pumps
- Asphalt Pumps
- Thin Liquid Vane Pumps
- Refrigeration Ammonia Pumps
- Fuel Oil Pumps
- Chocolate Jacketed Pumps



RET 5477

Wright Flow Technologies a division of Viking Pump, delivers solutions for our customers by offering a comprehensive, leading-edge technology portfolio (including the Revolution, Rotary Lobe, and Circumferential Piston pumps) for applications in the Beverage, Bio-Tech, Chemical and Industrial, Dairy, Food, Personal Care, and Pharmaceutical industries.

ROTARY LOBE PUMP

HYGIENIC PRODUCT LINE

Wright Flow rotary lobe pumps feature non-contacting lobes and large chambers that are able to handle large particles without damage to the pump. Their CIP and SIP capabilities are of the highest standards in the industry. Wright Flow's state-of-the-art technology sets the standard for hygienic, high viscosity applications, in line sterilization and simple maintenance.

- **Capacity** : Up to 832 GPM (189 m³/h)
- **Pressure** : Up to 174 PSI (12 bar)
- **Size** : Up to 6"
- **Surface Finish** : Standard 0.8 um Ra machine Finish
Enhanced Surface Finishes available
- **Viscosity** : Up to 910,000 SSU (200,000 cSt)
- **Temperature** : Up to + 355° F (+180° C)



DAYSIL

In accordance with the growth strategy that is designated by **DAYSIL**, the first step taken for the use of experience and knowledge that were obtained in the field of automotive and silicon technology in the different fields, has been the development of daysil branded membrane diffuser products.

SILICON DISC DIFFUSER

DAYSIL diffusers are measured according to the Advisory Leaflet ATV-M 209E (Measurement of the Oxygen Transfer in Activated Sludge Aeration Tanks with Clean Water and in Mixed Liquor) of DWA – German Association for Water, Wastewater and Waste.

- **Sizes** : 7" , 9" , 12"
- **Max flow rate** : Up to 15 m³/hr
- **Bubble size** : Up to 31- mm



HeliPower[®] PROJECTS



■ HeliPower® PROJECTS

■ SMART SOLUTIONS FOR MATERIAL HANDLING

Since its creation in 1987, Heliopower has defined the leading edge of technology for material handling & Vacuum Systems applications in the process industries in Egypt. Heliopower designs, produces, sells and supports Pumping, vacuum, feeding and conveying equipment as well as complete process solutions

Heliopower Test Labs

Fully equipped testing facilities help in making the optimal equipment selection

Systems Engineering Support

One source engineering of your entire material handling project.

Our system engineers will work with you from concept to commissioning.

Service Support

Trained, certified service engineers located around the country to provide twenty four hour technical support and to solve your problem any time, any day.

Custom Service Programs

Start-up and preventive maintenance programs designed for your specific installation.

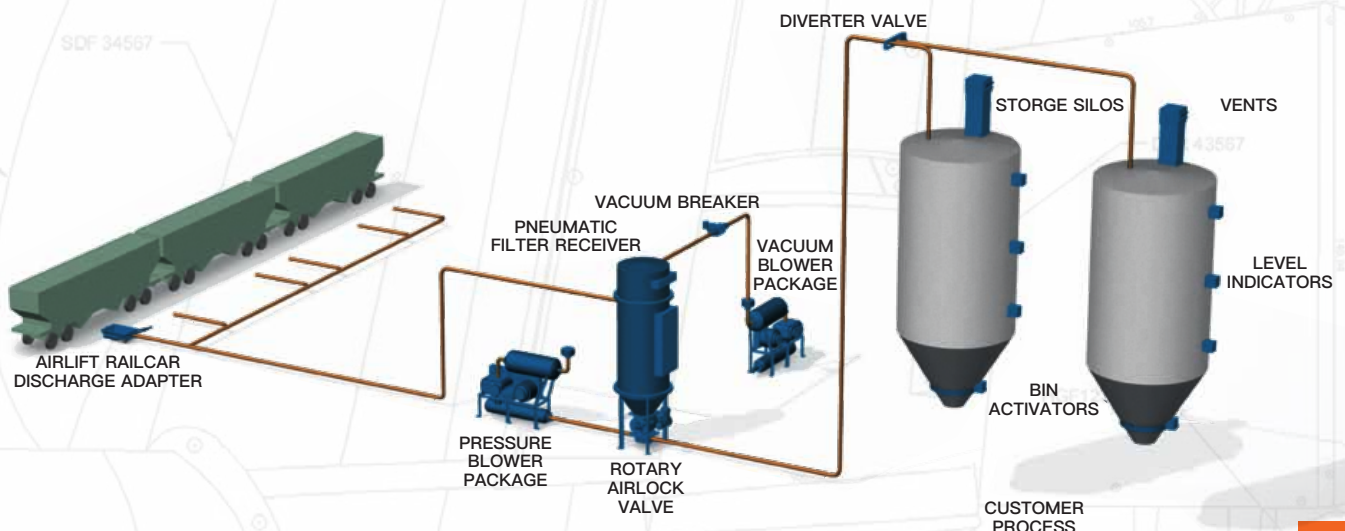
On shelf Spare Parts

Quick delivery so you can safely limit your inventory to the most critical parts.

Professional Training

Heliopower Institute provides hands on maintenance, mechanical and operator training for all of your Heliopower equipment, either on site or at Heliopower Facility.

PRESSURE / VACUUM CONVEYING - DILUTE PHASE



■ BULK UNLOADING AND STORAGE SYSTEMS

Pneumatic conveying represents the core of Heliopower bulk material handling systems. Whether it's a simple system, or achieving great performance with difficult materials, our application knowledge and ability to effectively handle a large variety of materials have earned us the trust of our customers.

A bulk unloading and storage system can increase production and plant efficiency while decreasing labour, material and energy costs. Heliopower has time-proven capability to tailor an unloading and storage system to meet specific applications. Consideration to plant layout, how material is received, the material's characteristics and conveying distance and rate are taken to ensure maximum system performance to handle materials.



■ VACUUM SYSTEMS

We offer cutting-edge, custom-made solutions for vacuum applications that fit with customers' needs across a wide range of industries. We are committed to delivering complete systems and turn key solutions based on each customer's choice of technologies. For every customer, we deliver a powerful combination of high-efficiency pumps, specially selected peripheral equipment, and skilled support from an experienced team.

- **Cost-effective systems**
- **High performance solutions**
- **Maximum product uptime**
- **Worldwide service network**

Recognised as Egyptian Market vacuum specialists, we respond to any requirement with the most competitive, cost-effective solution.





SCAN ME

No 7 block 12004 N. Industrial zone, Al Obour city ,11828 Egypt.

+(202) 4489 1565

+(202) 4489 1575

info@heliopower.com.eg

www.heliopower.com.eg

HPO3 rev.21